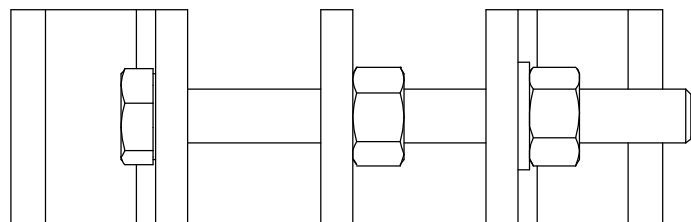
TYPICAL INSTALLATION
USING CLAMPS

ITEM	PART NO.	DESCRIPTION	DRAWING NO.	QTY PER BAG
1	3902100/68	V CLAMP	3/9099001	4
2	3902099/68	CLAMP PLATE	3/9099002	2
3	5473200/68	M10x100 HEX HEAD HEAD SCREW 8.8 GRADE GALV.	-	4
4	6273600/68	M10 FULL NUT MILD STEEL 8.8 GRADE GALV.	-	8
5	6773600/68	M10 PLAIN WASHER MILD STEEL 8.8 GRADE GALV.	-	4

TORQUE SETTING

M10 - 40Nm

SHEET 1 OF 1



THE COPYRIGHT OF THIS DOCUMENT
IS RESERVED BY JAYBEAM LTD
IT IS ISSUED IN CONFIDENCE AND MUST NOT
BE COPIED, REPRODUCED OR DISPLAYED
TO A THIRD PARTY EITHER WHOLLY OR
IN PART WITHOUT THE WRITTEN CONSENT
OF JAYBEAM LTD

TOLERANCES
UNLESS OTHERWISE STATED
TOLERANCES TO BE AS
FOLLOWS :-

NO PLACE DECIMAL - $\pm 0.5\text{mm}$
1 PLACE DECIMAL - $\pm 0.25\text{mm}$
2 PLACE DECIMAL - $\pm 0.15\text{mm}$
HOLE CENTRES - $\pm 0.25\text{mm}$
ANGLES - $\pm 1.0^\circ$

ALL DIMENSIONS IN MILLIMETRES (mm)
UNLESS OTHERWISE SPECIFIED



Amphenol Antenna Solutions,
Rutherford Drive, Park Farm South, Wellingborough,
Northamptonshire, NN8 6AX, England
Telephone: (01933) 408 408
International: +44 1933 408 408
Fax: (01933) 408 403

MATERIAL

-

FINISH

-

TITLE

PARALLEL CLAMPS P/N 0300120/00 (REF: 9099)

DRAWN
CSDATE
02/05/2013

REFERENCE

0300120-00

SCALE
1:1ENG. APP'D
DHBQA APP'D
SLS

9255506

ISSUE
1

1	13-042	INITIAL ISSUE	02/05/2013	JL
ISSUE	CHANGE NOTE NO.	DESCRIPTION	DATE	APP'D